



SUPER RESILIENT WHEEL

We make it *possible*






Light Rail Vehicle – Super resilient wheels



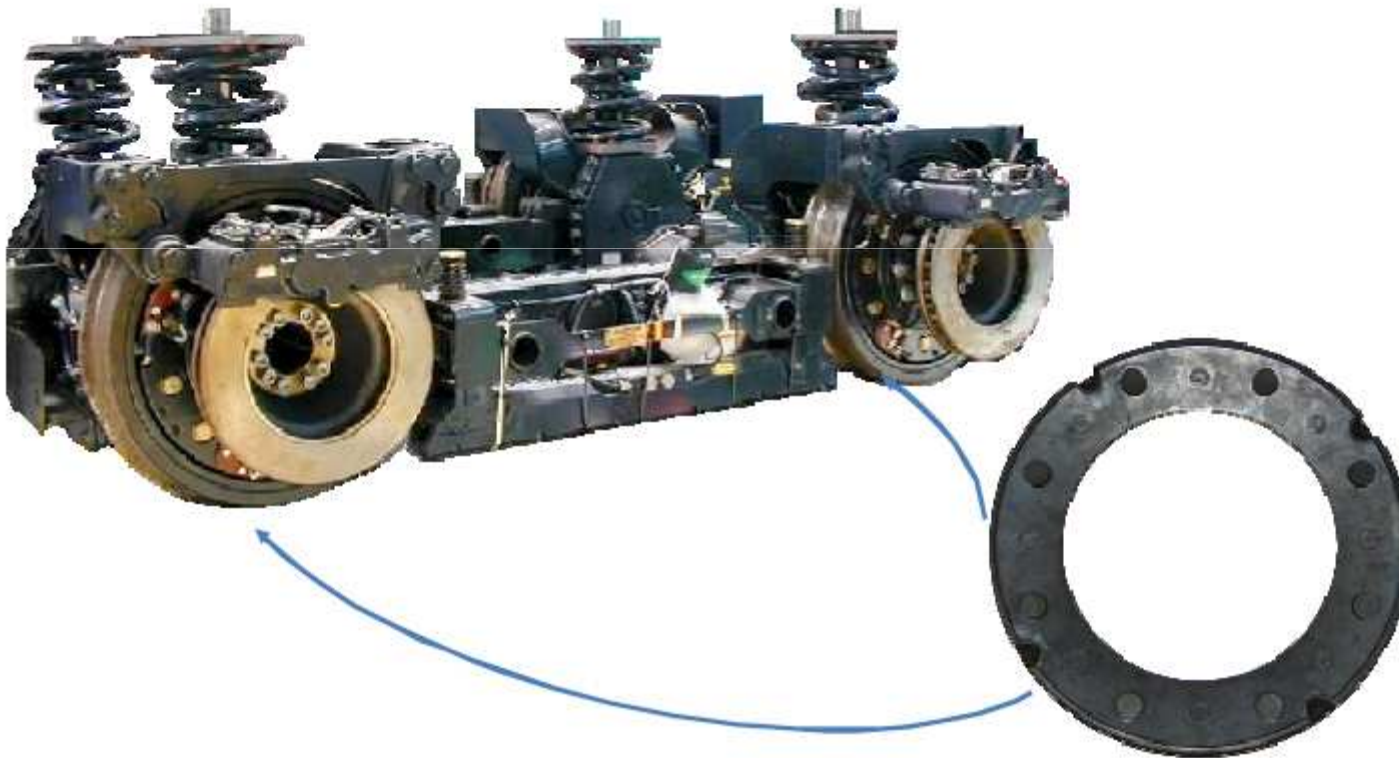
Super resilient wheels functions:

- Reduce ground-borne vibrations caused by low floor trams heavy, non suspended loads. Thus, they help protect the surrounding environment from noise and vibrations.
- Decrease the wheel and track wear through elastic foundation of the wheel tire
- Lower operating costs, as the entire wheel doesn't require to be replaced at the end of its lifecycle, but only the wheel tire.

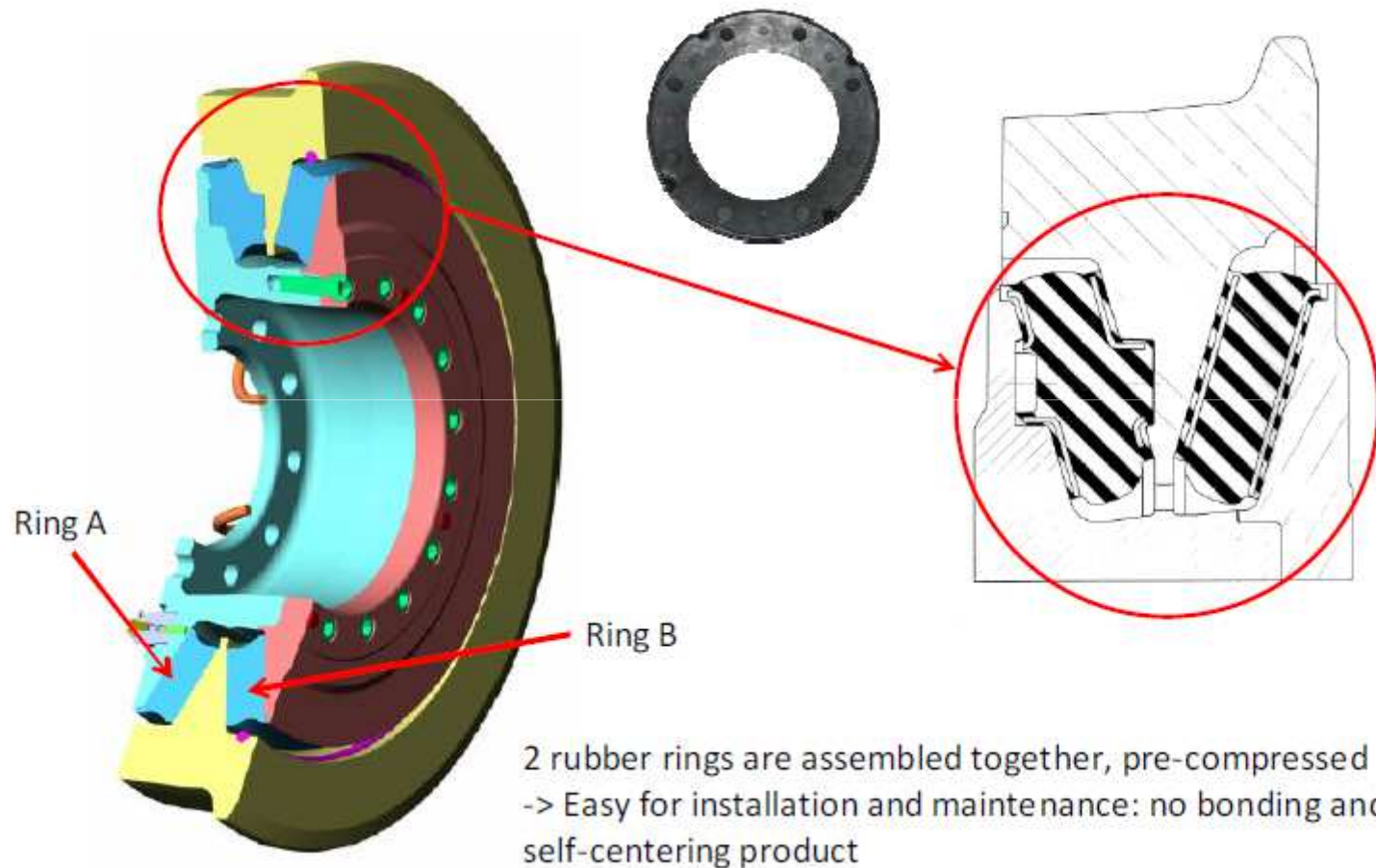



Light Rail Vehicle – Super resilient wheel

This design is comprised of 2 rubber rings per wheel

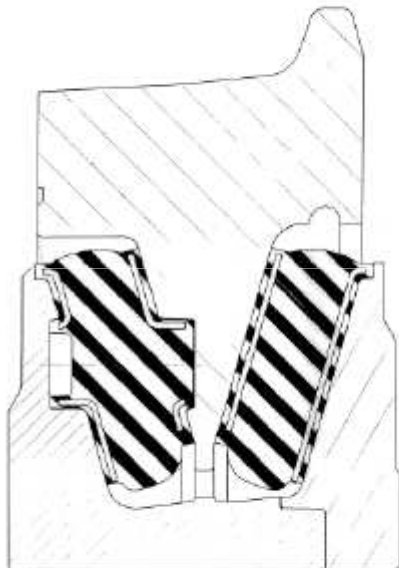


Light Rail Vehicle – Super resilient wheel





Light Rail Vehicle – Super resilient wheel



General Characteristics:

- 2 ring sizes: 480 and 600 mm
- Vertical static stiffness: from 20 to 35 kN/mm
- Lateral stiffness : from 25 to 40 kN/mm
- Load per axle: up to 12500 kgs
- Wheel outside diameter: 590 mm and more
- Lifetime: around 250000 km

Service Proven applications :



Melbourne 36 train sets



Barcelone :37 train sets



Dublin : 21 train sets



Paris : 13 train sets



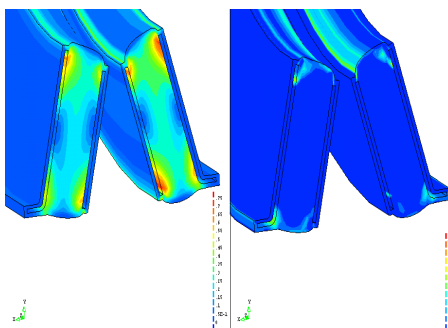
Lyon : 47 train sets



+ TUNIS, GRENOBLE;TENERIFE MADRID, STRASBOURG, MULHOUSE.....



Service Proven application :city of GRAZ (Austria)





Validation Facilities



Axial with excentrated load



Test in torsion



Radial test

We make it *possible*