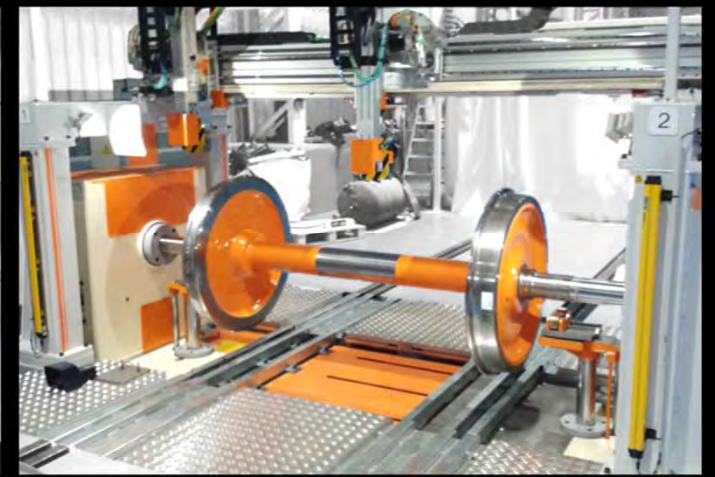




SEG

A CIM Group company

MANUFACTURER OF RAILWAY DEPOT EQUIPMENT



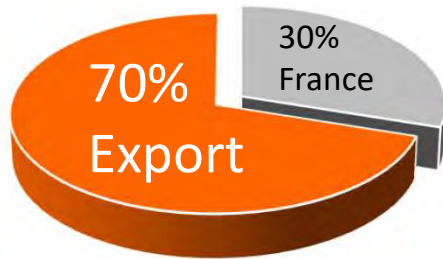
Designer and manufacturer of railway workshop equipment

Based in the North of France, **SEG** is among the **world leaders** in design and manufacturing of a **complete range of depot equipment** dedicated to railway maintenance. More than **40 years of excellence and innovation** to offer solutions adapted to all conditions.



A Worldwide presence

100% for the railway sector



Present in more than **40** countries



SEG is providing full **Services** and **Maintenance** all around the world with a professional & dedicated team

Our Range of Products

ASSEMBLING



WHEEL MOUNTING AND DISMOUNTING PRESS

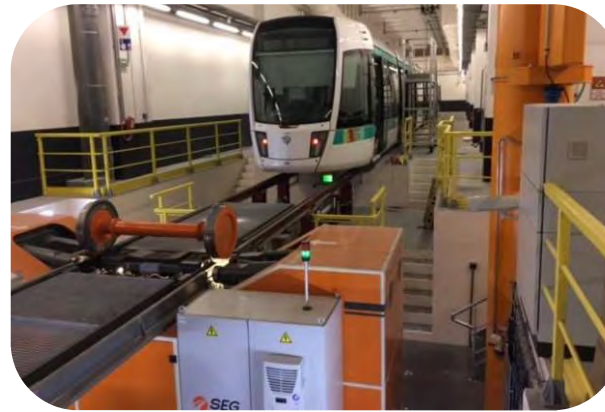
Automatic assembling and disassembling of wheelsets using automation (PLC)



BOGIE PRESS

Bogie assembling and disassembling

REPROFILING

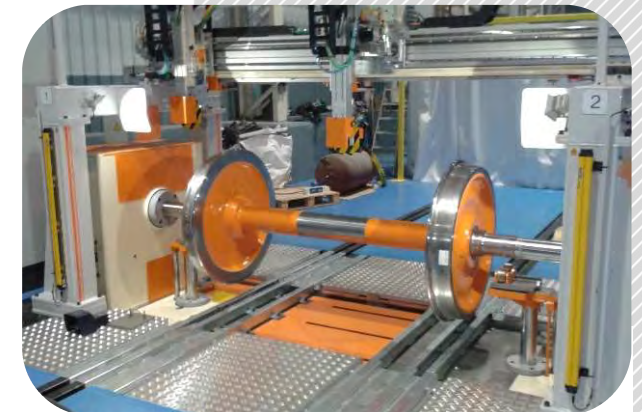


UNDER FLOOR WHEEL LATHE

Wheel reprofiling of :

- Locomotives,
- High-speed trains
- Conventional trains
- EMU/DMU,
- Metros,
- Tramways .../...

CONTROL / MEASURE



WHEEL SET MEASURING BENCH

Laser measuring to monitor and control dismantled wheel sets



BOGIE TESTING BENCH

Ensure the load repartition on the 4 wheels of a bogie



SPRING TESTING BENCH

Calibration of suspension springs



BOGIE SQUARE MEASUREMENT BENCH

Flatness control of the bogie frame

Wheel Presses



200 to 600T double cylinder press for mounting & dismounting



'Pass-trough' press



200 to 400T single cylinder press for mounting & dismounting



Dedicated gantry crane



Automatic measuring arms

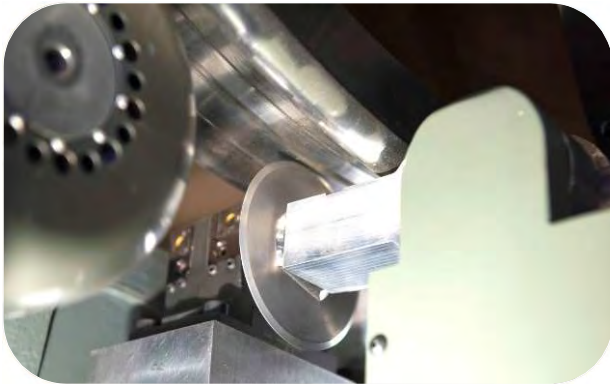


Wheelsets loading trolley (manual or automatic)

MOUNTING AND/OR DISMOUNTING OF WHEELS, BRAKE DISCS, GEARS
SINGLE CYLINDER OR DOUBLE CYLINDER
CAPACITY: 200 TO 600 TONS



Underfloor Wheel Lathes



high-accuracy, complete profile
dynamical measurement

Internal clamping

External clamping

A COMPLETE RANGE OF UNDERFLOOR WHEEL LATHES,
FROM 15 TO 30 TONS/AXLE - FROM TRAMWAYS TO LOCOMOTIVES
SINGLE OR DOUBLE (TANDEM) - INTERNAL OR EXTERNAL CLAMPING SYSTEM



[Underfloor wheel lathe presentation video →](#)



Bogie Presses



Bogie load testing press

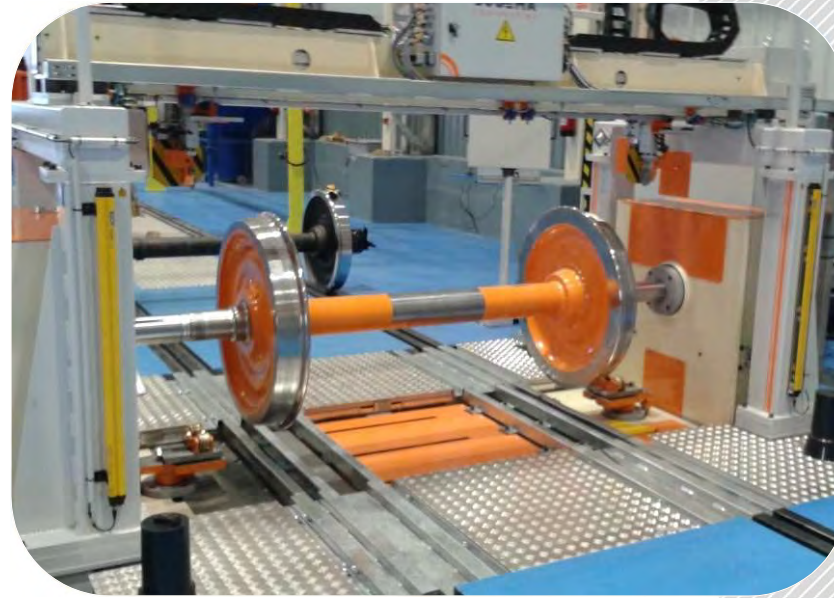


Bogie load testing press with inspection pit



Bogie assembling press

Wheelset Measuring Benches



Laser measurement of:

- Wheel diameter
- Complete profile
- Wheel defect
- Wheel axial deviation
- Wheel radial deviation
- Bearing seats radial deviation
- Middle of the axle radial deviation
- Internal face gauge

AUTOMATIC HIGH-ACCURACY MEASUREMENT
OF ALL THE WHEELSET'S MAIN DIMENSIONS

AUTOMATIC LIFTING AND ROTATION OF THE WHEELSET

Other equipment



TARESS SPRING PRESSES

Measurement of bogie suspension springs axial & radial stiffness



BOGIE FRAME 3D MEASURING ARMS

High accuracy 3D geometrical control of bogie frames



AUTOMATIC WHEEL PROFILE MONITORING SYSTEMS

'On-track' diameter and profile measuring device, to monitor the wear of rolling stock wheels



'BESPOKE' SOLUTIONS

Thanks to more than 40 years of experience in designing depot equipment, our design office develops and adapts innovating solutions adapted to each of our clients' needs.

Our Services

MAINTENANCE

Over 45 years of maintenance in our clients' depots for all types of equipment, manufactured by SEG or not. We develop and execute global or specific maintenance solutions

RETROFIT & MODERNIZATION

Our worldwide expertise with Railway Operators and all major manufacturers allows us to provide tailor-made solutions for all phases of the life cycle of strategic depot equipment, improving their reliability, performance and lifetime. We therefore offer various modernization possibilities on Hydraulic Presses and Underfloor Wheel Lathes.

EXPERTISE

Thanks to its expertise of manufacturer and maintainer, SEG developed a wide range of support solutions. These services can cover any additional need for the customer such as:

- Training of maintenance technicians
- Support for Maintenance Engineering
- Incorporation of the latest technological breakthroughs to existing equipment

SPARE PARTS

Thanks to its experience as a manufacturer of OEM parts, SEG provides railway operators and maintainers a large catalogue of spare parts and engineering expertise.



SEG supports its clients in offering them a wide range of personalized services for all their depot equipment.

OUR STRENGTHS

- A strong know-how and expertise in the **rail industry**, with a special focus on **wheelsets and bogies**.
- **Designer and manufacturer** of a wide range of equipment dedicated to the **bogies and its sub-assemblies' maintenance and control**.
- A large experience with many national and international operators and constructors, along with the **ability to adapt ourselves to any kind of rolling stock**.
- A competent service with **local experts**.
- **Innovation** at the heart of our design process.

Some recent references (1/8)



📍 France

Underfloor Wheel Lathe RNG 20 – RATP Ile de France.

The latest generation of RNG20 Underfloor Wheel Lathe is dedicated to the T2 tramway line in Paris. It has been designed, manufactured and installed by SEG's teams.



📍 France

2 Tandem Heavy Underfloor Wheel Lathes for High Speed Trains & Regional trains - SNCF Conflans & Mantes la Jolie

Design of 2 heavy tandem towers of our latest generation with option of manufacturing, installation and commissioning on dedicated sites for TGV and regional lines.

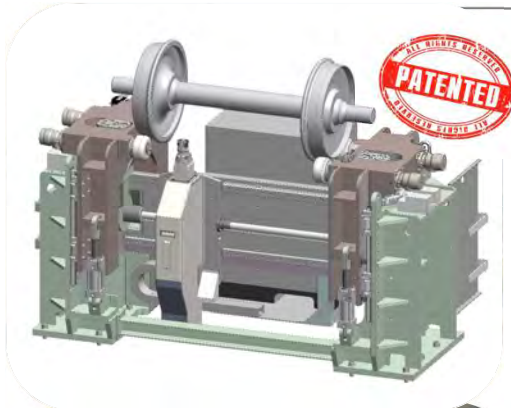


📍 France

Tour en Fosse RNG 20 – ALSTOM Projet Grand Paris L18.

RNG20 lathe dedicated to the new metro line of the Grand Paris Express project in cooperation with Alstom.

Some recent references (2/8)



📍 Switzerland

Compact pit lathe TA20 for the Swiss operator FART.

Ultra compact dimensions - This innovative and unique lathe will be installed in a classic maintenance pit in workshops restricted in size and not dedicated to reprofiling up to now. The compactness of the lathe also allows it to be transported. (Possibility for the operator to share this strategic equipment between different workshops).



📍 Singapore

300 tons double cylinder Wheel Press to Siemens & MTA in Singapore

Our Press will ensure mounting and dismounting of wheelsets with optimized cycle time thanks to automatic loading and unloading carriage.



📍 France

Laser Wheelset measuring bench to LORMAFER

Automatic high-accuracy measurement of multiple wheelset dimensions including automatic lifting and rotation of the wheelset for LORMAFER as a leading European player in the maintenance of railcars.

Some recent references (3/8)



📍 Marocco

Underfloor wheel lathe in Casablanca

As part of the construction of lines T4 and T3 of the Casablanca tramway, a new centre of excellence for the operation and maintenance of the tramway will be built and equipped with our new generation of UnderFloor Wheel Lathe RNG20. Our supply includes a dedicated Shunter integrated with the Lathe.



📍 France

New Wheelset Measuring Bench for SNCF

In the frame of the modernization of its workshops, SNCF awarded SEG to supply 4 new Wheelset Measuring Benches. The laser measuring bench will be used for controlling mounted wheelsets.



📍 Marocco

Spring Presses for RATP Dev & TRANSDEV

2 presses for the measurement of bogie suspension springs for Tranway workshops for Casablanca L1 & Rabat.

Some recent references (4/8)



📍 Tanzanie

X2 Heavy Underfloor wheel lathes for a Major railway project in Tanzania

Our heavy-duty UFWLs will equip Dar Es Salaam and Morogoro (DSM) and Morogoro to Makutupora (MDM) depots in the first two phases of the Uganda-Rwanda Democratic Republic of Congo and Tanzania railway project. .



📍 France

Underfloor wheel lathe of Paris region L10 project

After Line 9, SEG is also supplying its underfloor wheel lathe the L10 Train. This new tramway line will link Anthony to Clamart, near Paris.



📍 France

Underfloor wheel lathe in Versailles for SNCF's T13 Express project

Within the frame of a global civil contract associated to SNCF, SEG supplied an underfloor wheel lathe dedicated to the Line 13 (Express train that run between Saint-Cyr-L'Ecole and Saint-Germain-en-Laye, near Paris).

Some recent references (5/8)



📍 Ivory Coast

A wheel press for Abidjan

SEG supplied a 200 tons double cylinder wheel press for private workshop in Ivory Coast. This press is installed in Abidjan for Bolloré group, operating railways in Ivory Coast, Burkina Faso and Cameroon.

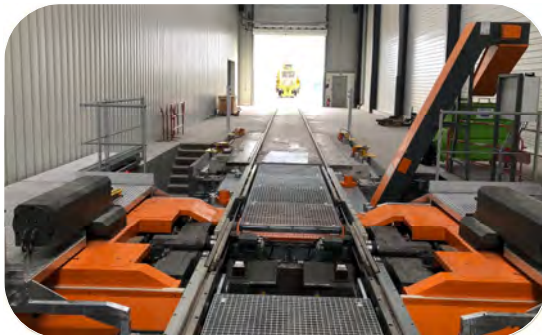


📍 France

Heavy-duty Underfloor Wheel Lathe for SNCF

SNCF has entrusted SEG with the supply of a new RNG30 underfloor wheel lathe for Dijon maintenance facility.

This heavy duty multipurpose underfloor wheel lathe is dedicated to the reprofiling of a large range of vehicles.



📍 France

Heavy-duty Underfloor Wheel Lathe for the civil contractor EIFFAGE

SEG RNG30 “heavy duty” underfloor wheel lathe installed in Eiffage new maintenance workshop. This underfloor wheel lathe, which has a permissible axle load of 30 tons, is dedicated to the reprofiling of the railway works machines as well as locomotives and multiple other rolling stocks in France.

Some recent references (6/8)



 Egypt

A second wheel press and other equipment for Cairo Metro

400 tons double cylinder wheel Mounting and dismounting press and other equipment to be installed in Cairo Metro's new maintenance depot.



 Algeria

Set of depot equipment in Algeria

Multiple depot equipment for SNTF in a maintenance workshop in Algiers. Among these, two spring testing presses and two damper test benches.



 Vietnam

Depot equipment supply contract for Hanoi Metro workshop

Underfloor wheel lathe, wheel press and bogie turntables for maintenance depot in Hanoi Metro line 3 (MRB).

Some recent references (7/8)



📍 France

Underfloor wheel lathe dedicated to Massy-Evry Train near Paris

Underfloor wheel lathes dedicated to the new maintenance workshop of Massy-Evry train. This project is managed by SNCF and AREP.



📍 France

Underfloor wheel lathe for Paris L9 and its maintenance workshop

Connecting the south of Paris to Orly, CIM group and its subsidiary SEG & MECHAN will provide the complete workshop equipment for the maintenance depot of the Line 9 of Paris' region. SEG supplied the underfloor wheel lathe and is doing the maintenance of the full depot.



📍 France

SEG put into service 1 Underfloor wheel lathes RNG20 for RATP

The latest generation of Underfloor wheel lathe is dedicated to the tramway line T3 in Paris. It has been designed, manufactured and installed by SEG's teams.

Some recent references (8/8)



📍 Algeria

4 wheel presses to SNTF (Algerian national railway operator)

4 mounting/dismounting, 400 tons capacity, wheel presses have been delivered to SNTF within the frame of a large workshops modernisation program.



📍 India

Fully automatic press for wheelset mounting line in India

100% automatic mounting press dedicated to a wheelset production factory in Bangalore. This press is integrated within an automatic wheelset production line. It is equipped with a pre-assembly station and an automatic transfer trolley.



📍 Ethiopia

2 presses in Ethiopia

Within the frame of Awash – Kombolcha - Hara Gebaya railway project, SEG delivers two wheels and bearing mounting/dismounting presses.



SEG

A CIM Group company



WWW.SOGEMA-ENGINEERING.COM
CONTACT@SOGEMA-ENGINEERING.COM